



# AISR120

AIS RECEIVER



**INSTRUCTION MANUAL**

## CONTENTS

<b>NOTICES .....</b>	<b>3</b>
Safety Warnings.....	3
General Notices .....	3
<b>ABOUT YOUR AIS RECEIVER.....</b>	<b>5</b>
About AIS .....	5
What's in the Box?.....	6
<b>INSTALLATION .....</b>	<b>8</b>
Preparing for Installation .....	8
Installation Procedures .....	9
<b>OPERATION .....</b>	<b>16</b>
Using the AIS Receiver.....	16
Indicator Functions .....	16
<b>TROUBLESHOOTING.....</b>	<b>17</b>
<b>SPECIFICATIONS.....</b>	<b>18</b>
<b>GME WARRANTY AGAINST DEFECTS .....</b>	<b>19</b>

## NOTICES

When reading this manual please pay particular attention to warnings marked with the warning triangle shown on the left. These are important messages for safety, ! installation and usage of the product.

### SAFETY WARNINGS

---

- This equipment must be installed in accordance with the instructions provided in this manual.
- This equipment is intended as an aid to navigation and is not a replacement for proper navigational judgement.
- This AIS receiver is an aid to navigation and must not be relied upon to provide accurate navigation information. AIS is not a replacement for vigilant human lookouts and other navigation aids such as RADAR. The performance of the AIS receiver may be seriously impaired if not installed as instructed in the user manual, or due to other factors such as weather and or nearby transmitting devices. Compatibility with other systems may vary and is reliant on the third party systems recognising the standard outputs from the AIS receiver. The manufacturer reserves the right to update and change these specifications at any time and without notice.
- Do not install this equipment in a flammable atmosphere such as in an engine room or near to fuel tanks.

### GENERAL NOTICES

---

#### Compass Safe Distance

The compass safe distance of this unit is 0.5m or greater for 0.3° deviation.

#### RF Emissions Notice

Caution: The AIS receiver generates and radiates radio frequency electromagnetic energy. This equipment must be installed and operated according to the instructions contained in this manual. Failure to do so can result in personal injury and / or AIS receiver malfunction.

Caution: The antenna should not be co-located or operated in conjunction with any other transmitting antenna. The required antenna impedance is 50Ω.antenna.

## **Warranty**

The product is supplied with standard warranty as defined in the Warranty statement supplied with the product.

**Any attempt to tamper with or damage the product will invalidate the warranty.**

## **Disposal of this Product and Packaging**

Please dispose of this AIS antenna splitter in accordance with the European WEEE Directive or with the applicable local regulations for disposal of electrical equipment.

Every effort has been made to ensure the packaging for this product is recyclable. Please dispose of the packaging in an environmentally friendly manner.

## **Accuracy of this Manual**

The AIS antenna splitter may be upgraded from time to time and future versions of the AIS antenna splitter may therefore not correspond exactly with this manual. The manufacturer of this product disclaims any liability for consequences arising from omissions or inaccuracies in this manual and any other documentation provided with this product.

### ABOUT AIS

---

The marine Automatic Identification System (AIS) is a location and vessel information reporting system. It allows vessels equipped with AIS to automatically and dynamically share and regularly update their position, speed, course and other information such as vessel identity with similarly equipped vessels. Position is derived from the Global Positioning System (GPS) and communication between vessels is by Very High Frequency (VHF) digital transmissions.

There are a number of types of AIS device as follows:

- **Class A Transceivers.** These are similar to class B transceivers but are designed to be fitted to large vessels such as cargo ships and large passenger vessels. Class A transceivers transmit at a higher VHF signal power than class B transceivers and therefore can be received by more distant vessels, and also transmit more frequently. Class A transceivers are mandatory on all vessels over 300 gross tonnes on international voyages and certain types of passenger vessels under the SOLAS mandate.
- **Class B Transceivers.** Similar to class A transceivers in many ways, but are normally lower cost due to the less stringent performance requirements. Class B transceivers transmit at a lower power and at a lower reporting rate than class A transceivers.
- **AIS Base Stations.** AIS base stations are used by Vessel Traffic Systems to monitor and control the transmissions of AIS transceivers.
- **Aids to Navigation (AtoN) Transceivers.** AtoNs are transceivers mounted on buoys or other hazards to shipping which transmit details of their location to the surrounding vessels.
- **AIS Receivers.** AIS receivers will generally receive transmissions from class A transceivers, class B transceivers, AtoNs and AIS base stations but do not transmit any information about the vessel on which they are installed.

## WHAT'S IN THE BOX?

Figure 1 shows the items included with your AIS antenna splitter purchase. The following sections give a brief overview of each item. Please ensure all items are present and if any of the items are not present contact your dealer.

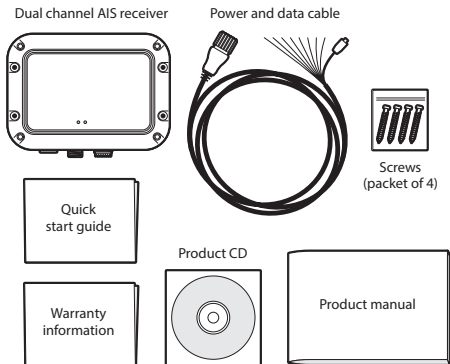


Figure 1 Items included with the product.

- **Support Tools CD:** The CD supplied with the package contains the USB drivers to enable use of the AIS receiver via its USB interface. Also included on the CD is the product manual in other languages.
- **Quick Start Guide:** The quick start guide gives a handy one page reference for the installation process.
- **Product Manual:** This document is the product manual and should be read thoroughly prior to any attempt to install or use the AIS receiver.
- **Fixing Screws:** Four fixing screws are provided with the product for mounting of the AIS receiver. Please refer to section 3.2 for details of how to mount the AIS receiver.
- **AIS Receiver Unit:**  
Figure 2 shows an overview of the AIS receiver unit.  
The AIS receiver has an indicator which provides information to the user about the status of the AIS receiver. Please refer to section 4.2 for more details of the indicator functions.
- **Accessory Cable:** The accessory cable provides connections to the AIS receiver for power supply, NMEA0183 and USB.

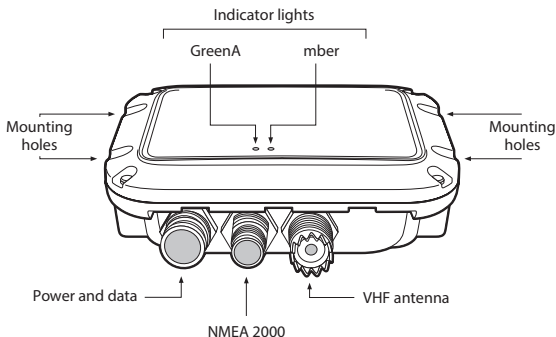


Figure 2 AIS receiver overview

## Electrical Connections

The AIS receiver has the following electrical connections:

- Power supply
- NMEA0183 data port for connection to chart plotters
- USB for connection to a PC or Mac
- NMEA2000 port for connection to NMEA2000 compatible equipment

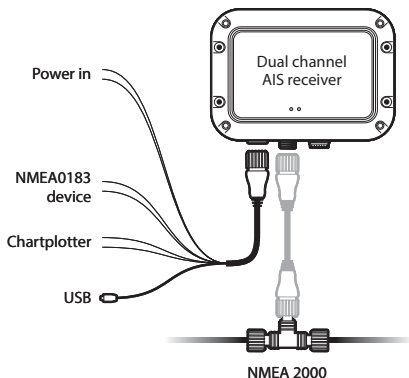


Figure 3 Electrical connections to the AIS receiver

## PREPARING FOR INSTALLATION

Figure 4 shows a typical installation configuration for the AIS receiver. Please take the time to familiarise yourself with the system elements and their connections prior to attempting installation.

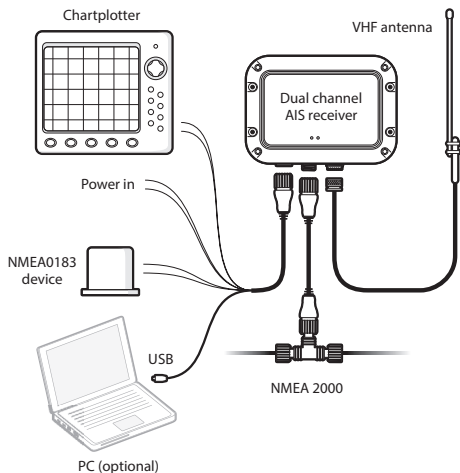


Figure 4 Typical installation

In addition to the items provided with your AIS antenna splitter the following items will be required for installation:

### VHF Antenna

A VHF antenna used for voice communications will be sufficient. Please take note of the warnings in section 1 regarding the use of antennas. Alternatively, if you wish to use an existing VHF antenna, antenna splitter products are available which allow the existing antenna to be used with two radio devices, such as a VHF voice radio and the AIS receiver.



## **Antenna Cables**

Please check that the VHF antenna you intend to use has sufficient cable to reach between the VHF antenna and the AIS receiver unit. If it is not sufficient you will need an extension cable. Please contact your dealer for details of suitable products. For reference the VHF antenna connector type on the AIS receiver unit is SO239, and is intended to mate with a PL259 connector.

## **Power and Data Cables**

The AIS receiver unit is supplied with a two metre long power and data cable the AIS receiver unit is supplied with a two meter long power and data cable. If you require longer cables to reach your power supply, please ensure the cables are capable of carrying an average current of up to 200mA. Means of connecting the cables together will also be required. The use of Scotchlok™ connectors is recommended for this purpose.

## **Chart Plotter**

To display received AIS position reports as other vessels on your chart plotter, you will need to connect your AIS receiver to your chart plotter. Please refer to the user manual supplied with your chart plotter for details of how to connect and configure your chart plotter for use with AIS devices. For general guidance your chart plotter should be configured to accept NMEA data at 38400 baud (sometimes referred to as 'NMEA HS' in the plotter configuration menu). You may also need to enable the display of AIS targets in the chart options.

## **Connection to a PC or Mac**

If you choose to use a PC or Mac with suitable charting software to display received AIS messages as other vessels, this can be accomplished by connecting the USB connector directly to the PC or Mac. Your PC may require USB software drivers to connect to the AIS receiver and these can be found on the CD included with the product.

## **INSTALLATION PROCEDURES**

---

Before beginning installation of your AIS receiver, please ensure you have the necessary additional items as detailed in section 3.1. It is strongly recommended that you read all of the instructions in this manual prior to installation.

If after reading this manual you are unsure about any element of the installation process please contact your dealer for advice.

## Step 1 - Installing the AIS Receiver

Please note the following guidelines when selecting a location for your AIS receiver:

- The AIS receiver must be fitted in a location where it is at least 0.5m from a compass.
- There should be adequate space around the AIS receiver for routing of cables. See Figure 5 for details of the AIS receiver dimensions.
- The ambient temperature around the AIS receiver should be maintained between -10°C and +55°C.
- The AIS receiver should not be located in a flammable or hazardous atmosphere such as in an engine room or near to fuel tanks.
- The AIS receiver is fully waterproof to ingress protection rating IPx7, however it is recommended that the AIS transceiver is not subjected to extended periods of exposure to spray or submersion.
- It is recommended that the AIS receiver is installed in a 'below decks' environment.
- It is acceptable to mount the AIS receiver either vertically or horizontally.
- The product is supplied with four self tapping screws for attachment of the AIS receiver to a suitable surface. Please refer to Figure 6 for guidance.
- The AIS receiver should be mounted in a location where the indicator is readily visible as this provides important information on the status of the AIS receiver.

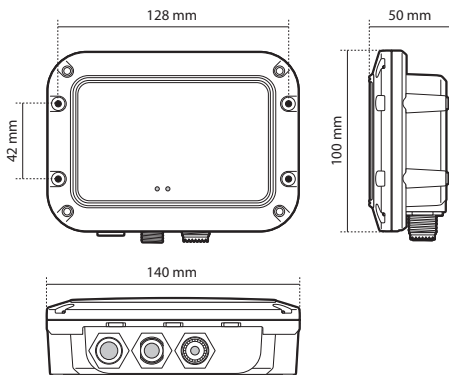


Figure 5 AIS receiver dimensions

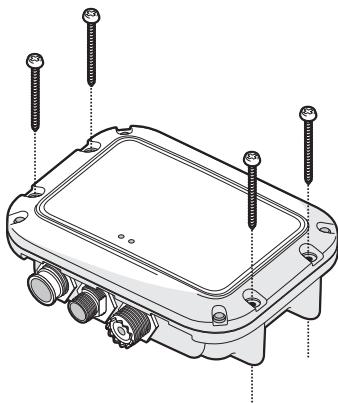


Figure 6 AIS receiver mounting

## Step 2 - Connecting the VHF Antenna

Route the cable from the VHF antenna to the AIS antenna splitter and connect to the VHF antenna connector on the AIS antenna splitter as shown in Figure 7.

A standard marine band VHF antenna or AIS antenna should be used with the AIS antenna splitter. The connector type on the AIS antenna splitter is SO239. Your chosen VHF antenna requires a PL259 connector to mate with this. If your VHF antenna does not use this type of connector please contact your dealer for details of available adaptors.

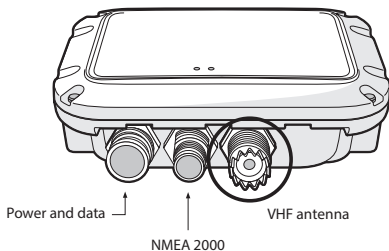


Figure 7 Position of the VHF antenna connector

### Step 3 - Connecting the Accessory Cable

An accessory cable is supplied with the product to provide connections to power, the NMEA0183 data ports and USB. The cable has a premoulded connector at one end which should be connected to the connector on the unit marked 'PWR/DATA'. The other end of the cable has eight colour coded bare wires ready for connection and a USB connector for use with a PC. The table below in Figure 8 lists the function of each colour coded wire for reference.

Wire colour	Description	Function
Red	Power in +	Power supply connections
Black	Power in -	
Light green	Not used	No connection
Orange	Not used	
Brown	NMEA0183 port 1 TX+	High speed NMEA0183 port (38,400baud) intended for connection to chart plotters
Blue	NMEA0183 port 1 TX	
Grey	NMEA0183 port 2 RX+	Low speed NMEA port (4,800baud) intended for connection to other NMEA0183 compatible sensors for multiplexing of data to the chart plotter
Yellow	NMEA0183 port 2 RX-	

Figure 8 Colour coding of wires in the accessory cable

**Please check your wiring very carefully before applying power to the product. Failure to wire the product correctly could result in permanent damage.**

## Step 4 - Connecting to NMEA0183 Compatible Equipment

The two independent NMEA0183 data ports provide connection to your chart plotter and other NMEA0183 compatible equipment. Each port consists of two wires colour coded as shown in the table in Figure 8 and in the diagram in Figure 9. Connect the wires to the appropriate connections on your NMEA0183 compatible equipment. Please refer to your equipment manual for more information.

The AIS receiver has a high speed output port which operates at 38400baud and a low speed input port which operates at 4800baud. The high speed port is intended primarily to connect to a chart plotter, while the low speed port is intended to connect to other NMEA0183 devices. A multiplexing feature is provided, which means any messages which are received via the low speed port are automatically transmitted via the high speed port. This is particularly useful when using a chart plotter having only a single NMEA0183 port as any other sensor (such as a gyro-compass) can be connected to the AIS receiver via the low speed port and the AIS receiver can be connected via the high speed port to the chart plotter resulting in the chart plotter receiving both AIS information and heading information simultaneously. Please ensure your equipment is configured to use the correct baud rate for the port it is connected to.

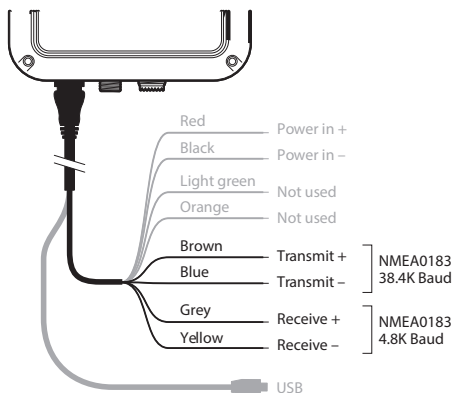


Figure 9 Connecting to the NMEA0183 data port

## **Step 5 - Connection to an NMEA2000 Network (Optional)**

The AIS receiver can be connected to an NMEA2000 network by a suitable NMEA2000 network cable available from your local dealer.

If your vessel has an NMEA2000 network please refer to the relevant documentation for your NMEA2000 equipment. Once connected, and with your chart plotter also connected to your NMEA2000 network you will be able to receive AIS targets on your chart plotter.

## **Step 6 - USB Connection (Optional)**

The AIS receiver is supplied with a USB port for connection to a PC or Mac. The USB connector can be connected directly to the USB port on the PC or Mac via the supplied USB cable. To enable connection of the AIS receiver to a PC the USB drivers, supplied on the product CD, must first be installed on the PC. Driver installation is typically not required for use with a Mac.

To install the drivers please follow the steps below:

1. Download the installation software from the GME website located on the product page.
2. Double click on the setup.exe file to launch the installer.
3. Follow the on screen installation instructions to complete installation.
4. Once installed the AIS unit can be connected to the PC. The USB drivers will be installed automatically and the AIS will appear as a new COM port device.
5. Select the AIS COM port and a baud rate of 38,400 in PC based navigation software to make use of the AIS data.

**If the USB connection is removed from the PC or Mac during use you must reset the connection before further use. To reset the connection, disconnect then reapply power to the AIS before closing and relaunching any PC or Mac applications using the USB connection. Finally, reconnect the USB cable between the PC or Mac and the AIS receiver.**

## Step 9 - Connecting to a Power Supply

The AIS receiver requires either a 12V or 24V power supply typically provided by the vessel's battery, or it can be powered via USB.

It is recommended that crimped and soldered lugs are used to connect the AIS receiver to the power source. It is recommended that the power supply is connected via a suitable circuit breaker and/or 3A fuse block.

1. Connect the red wire to a 12V or 24V power supply positive terminal.
2. Connect the black wire to the supply negative terminal.

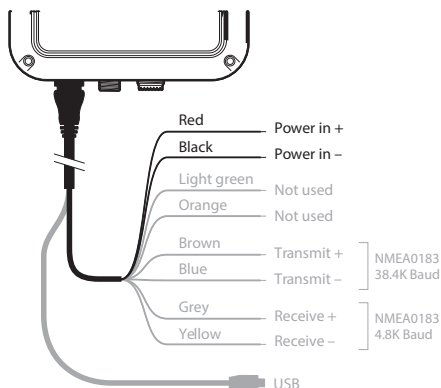


Figure 9 Connecting to the NMEA0183 data port

### USING THE AIS RECEIVER

Once the unit has been installed it is ready for use. Providing other vessels with AIS transceivers installed are within radio range of your vessel you should see their details appear on your chart plotter or PC.

Specific details of how to configure your chart plotter to make use of the AIS receiver features will be given in your chart plotter manual. If you are using charting software running on a PC, please refer to the instructions provided with your chart plotting software for details of how to configure it to display AIS information.

### INDICATOR FUNCTIONS

The AIS receiver includes a green power indicator light and an amber AIS reception indicator light as shown in Figure 11. The green indicator will illuminate when power is applied and the amber indicator will flash on receipt of AIS messages.

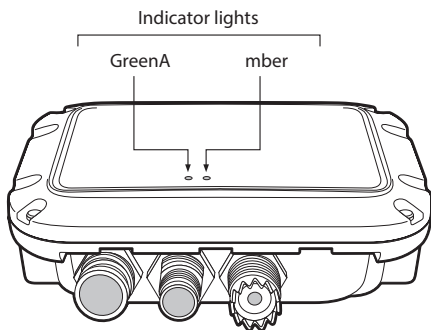


Figure 11 Indicator location on the AIS receiver unit



## TROUBLESHOOTING

Issue	Possible Cause and Remedy
No data is being received by the chart plotter	<p>Check that the power supply is connected correctly.</p> <p>Check that the connections to the chart plotter are correct.</p> <p>Check that the VHF antenna is correctly connected in accordance with the instructions in the manual</p>
<p>The power indicator is not illuminated</p> <p>The reception indicator is flashing but AIS targets are not displayed on the chart plotter</p>	<p>Check that the power supply is connected correctly.</p> <p>Check the chart plotter NMEA port configuration is set to receive AIS data</p> <p>Check the chart plotter display settings are configured to show AIS targets</p> <p>Consult the chart plotter manufacturers documentation</p>
The power indicator is illuminated but the reception indicator is not flashing to indicate receipt of AIS messages	<p>Check there are vessels equipped with AIS transceivers in your area</p> <p>Check the VHF antenna is correctly installed and connected</p>

If the guidance given in the table above does not rectify the problem you are experiencing please contact your dealer for further assistance.

## SPECIFICATIONS

Parameter	Value
Dimensions	140 x 100 x 42 mm (L x W x H)
Weight	250g (AIS receiver unit only)
Power	DC (9.6 - 31.2V) or USB powered Average power consumption <1W Current consumption <200mA at 12VDC
Electrical interfaces	USB NMEA0183 38.4kBaud output NMEA0183 4.8kBaud input NMEA2000 LEN=1
Connectors	VHF antenna connector (SO-239) USB type A plug NMEA2000 standard connector 12 way power input / NMEA0183
Dual channel receiver	Fixed frequency reception at 161.975MHz and 162.025MHz
Channel Bandwidth	25kHz
Receiver Sensitivity	Better than -112dBm at 20% Packet Error Rate
Environmental	Operating temperature: -25°C to +55°C
Ingress Protection rating	IPx7

## GME WARRANTY AGAINST DEFECTS

This warranty against defects is given by GME Pty Ltd ACN 000 346 814 (We, us, our or GME). Our contact details are set out in clause 2.7.

### 1. Consumer guarantees

- 1.1 Our goods come with guarantees that cannot be excluded under the Australian Consumer Law. You are entitled to a replacement or refund for a major failure and for compensation for any other reasonably foreseeable loss or damage. You are also entitled to have the goods repaired or replaced if the goods fail to be of acceptable quality and the failure does not amount to a major failure.
- 1.2 To the extent we are able, we exclude all other conditions, warranties and obligations which would otherwise be implied.

### 2. Warranty against defects

- 2.1 This warranty is in addition to and does not limit, exclude or restrict your rights under the Competition and Consumer Act 2010 (Australia) or any other mandatory protection laws that may apply.
- 2.2 We warrant our goods to be free from defects in materials and workmanship for the warranty period (see warranty table) from the date of original sale (or another period we agree to in writing). Subject to our obligations under clause 1.2, we will at our option, either repair or replace goods which we are satisfied are defective. We warrant any replacement parts for the remainder of the period of warranty for the goods into which they are incorporated.
- 2.3 To the extent permitted by law, our sole liability for breach of a condition, warranty or other obligation implied by law is limited
  - (a) in the case of goods we supply, to any one of the following as we decide –
    - (i) the replacement of the goods or the supply of equivalent goods;
    - (ii) the repair of the goods;
    - (iii) the cost of repairing the goods or of acquiring equivalent goods;
  - (b) in the case of services we supply, to any one of the following as we decide –
    - (i) the supplying of the services again;
    - (ii) the cost of having the services supplied again.
- 2.4 For repairs outside the warranty period, we warrant our repairs to be free from defects in materials and workmanship for three months from the date of the original repair. We agree to re-repair or replace (at our option) any materials or workmanship which we are satisfied are defective.

- 2.5 We warrant that we will perform services with reasonable care and skill and agree to investigate any complaint regarding our services made in good faith. If we are satisfied that the complaint is justified, and as our sole liability to you under this warranty (to the extent permitted at law), we agree to supply those services again at no extra charge to you.
- 2.6 To make a warranty claim you must before the end of the applicable warranty period (see warranty table), at your own cost, return the goods you allege are defective, provide written details of the defect, and give us an original or copy of the sales invoice or some other evidence showing details of the transaction.
- 2.7 Send your claim to:  
GME Pty Ltd.  
PO Box 96 Winston Hills,  
NSW 2153, Australia.  
Tel: (02) 8867 6000 Fax: (02) 8867 6199  
Email: servadmin@gme.net.au
- 2.8 If we determine that your goods are defective, we will pay for the cost of returning the repaired or replaced goods to you, and reimburse you for your reasonable expenses of sending your warranty claim to us.

### **3. What this warranty does not cover**

- 3.1 This warranty will not apply in relation to:
- (a) goods modified or altered in any way;
  - (b) defects and damage caused by use with non GME products;
  - (c) repairs performed other than by our authorised representative;
  - (d) defects or damage resulting from misuse, accident, impact or neglect;
  - (e) goods improperly installed or used in a manner contrary to the relevant instruction manual; or
  - (f) goods where the serial number has been removed or made illegal.

### **4. Warranty period**

- 4.1 We provide the following warranty on GME and Kingray products. No repair or replacement during the warranty period will renew or extend the warranty period past the period from original date of purchase.

PRODUCT TYPE	WARRANTY PERIOD
VHF marine transceivers and AIS	1 year



**[gme.net.au](http://gme.net.au)**  
GME Pty Ltd

17 Gibbon Road, Winston Hills NSW 2153, Australia

**Part Number:** 310549 **Drawing Number:** 45908-3