



## INSTRUCTION MANUAL

# RC900BT

DIN mount AM/FM radio CD/MP3 player  
with bluetooth/SD/USB/AUX and iPod connectivity



**CD**

**USB**

**SD**

**AUX**

**AMFM  
tuner**

## CONTENTS

FEATURES.....	2	CD/MP3 Operation.....	8
SUPPLIED WITH.....	2	MP3 Music Search .....	9
INTRODUCTION .....	3	Connecting an iPod* .....	10
GENERAL OPERATIONS.....	3	Connecting with Bluetooth.....	11
INSTALLATION .....	4	Front Panel Inputs.....	11
Precautions.....	4	Rear Output.....	12
Handling Compact Discs.....	4	Configuration Menu.....	12
Moisture/Condensation .....	4	CONFIGURATION MENU TABLE .....	12
Location.....	4	OPTIONAL ACCESSORIES .....	12
Installing RC900BT into a DIN Sized Recess.....	4	RC900BT TROUBLE SHOOTING GUIDE .....	13
Electrical Wiring .....	5	SPECIFICATIONS .....	14
OPERATION .....	7	STANDARD COMMUNICATIONS CONTRACT	
General Functions .....	7	WARRANTY AGAINST DEFECTS.....	15
Radio Operation.....	8		

## FEATURES

- **Bluetooth®** connectivity with handsfree mic
- AM/FM radio
- Front CD, USB, SD and auxiliary port
- MP3/WMA via USB/SD card
- iPod connectivity
- 4 x 45 watt power output
- Wide-angle view backlit LCD display
- Infrared remote control



The **Bluetooth** word mark and logos are registered trademarks owned by Bluetooth SIG, Inc. and any use of such marks by GME is under license.

\*iPod is a trademark of Apple Computer Inc., registered in the US and other countries.

## SUPPLIED WITH

- |                            |   |
|----------------------------|---|
| • RC900BT                  | • DIN Mounting Kit  |
| • Remote Control           | • Instruction Manual  |
| • DC/Speaker Cable Harness | Please immediately contact your point of purchase if any of these components are missing. |

## INTRODUCTION

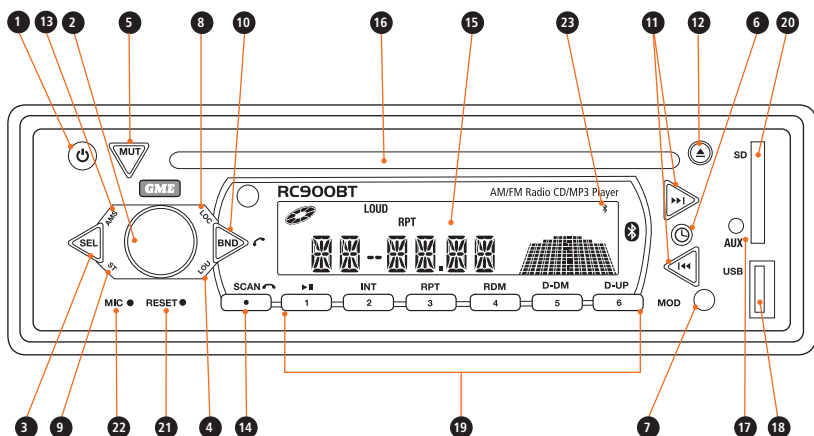
Congratulations on your purchase of the GME RC900BT **Bluetooth** wireless technology enabled CD/MP3 Player/AM/FM Radio. Your RC900BT has been designed with the music buff in mind, offering music enthusiasts the same level of audio quality normally reserved for high end home systems.

The RC900BT series has been developed utilising the very latest in digital electronic technology combined with the design expertise gained by GME engineers over several decades of product

development. The RC900BT has all the attributes expected from a superior car stereo system, inclusions of SD and USB inputs, iPod compatibility and now with **Bluetooth** ensuring the RC900BT provides many hours of in-car entertainment, seamless audio streaming and phone connectivity

Please read this instruction booklet carefully, drop in your favourite music selection, sit back and enjoy the sounds that cannot fail to impress even the most critical audiophile.

## GENERAL OPERATIONS



- |                       |                                |   |
|-----------------------|--------------------------------|---|
| 1 Power On/Off        | 9 Stereo/Mono Selector         | 17 Auxiliary Input                          |
| 2 Volume Control      | 10 Band Selector/ Phone Answer | 18 USB Input                                |
| 3 Select              | 11 Tuning/Selecting Tracks     | 19 Preset Memory Keys and CD/MP3 Functions. |
| 4 Loudness            | 12 Eject                       | 20 SD Card Input                            |
| 5 Mute                | 13 Auto Music Search           | 21 Reset Button                             |
| 6 Clock/Time Selector | 14 Scan/ Phone Hangup          | 22 Microphone                               |
| 7 Mode Switch         | 15 LCD Display                 | 23 Bluetooth icon                           |
| 8 LOC/DX Selector     | 16 CD Slot                     |   |

### PRECAUTIONS

If you are connecting your RC900BT for the first time or have just reconnected your vehicle battery and you are experiencing problems with the unit's operation, we suggest you try resetting the unit. The reset button is located on the front panel below the **Volume** control. Gently press the reset button with a paper clip or similar object.

The preset station memories and clock time are retained only while the yellow 'Memory' lead is connected to a continuous + 12 V DC supply (see Electrical Wiring section). If the battery is disconnected or switched off at the master switch, or the unit is removed from the vehicle, the station memories will be lost and the clock will need to be reset.

### HANDLING COMPACT DISCS

- Handle the CD by its edge, avoid touching the disc surface.
- Store your CDs away from direct sunlight or heat sources. Keeping the CD in its original case will help to keep it flat.
- Clean the CD with a soft cloth from the centre to the outer edge, (see diagram) rather than in a circular motion.

**Do not use solvents.**



### MOISTURE/CONDENSATION

Your RC900BT uses optical laser technology. Occasionally damp or humid conditions may cause condensation to appear on the lenses inside the unit. Should this occur, the unit might not operate

correctly. Simply eject the CD and leave the unit turned on for a while until the moisture evaporates.

**NOTE:** The RC900BT should not be mounted at angles greater than 30° above or below the horizontal.

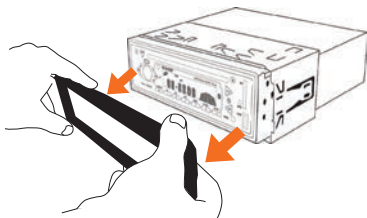
### LOCATION

GME recommends that the unit should be mounted in a position that is free from direct sunlight and excessive vibration.

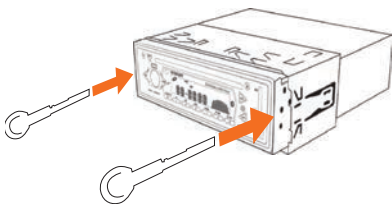
### INSTALLING RC900BT INTO A DIN SIZED RECESS

The RC900BT is designed to be installed with the mounting accessories provided.

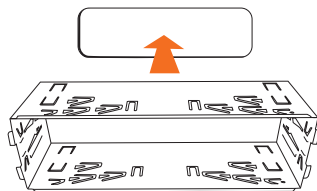
1. Remove the front panel surround.



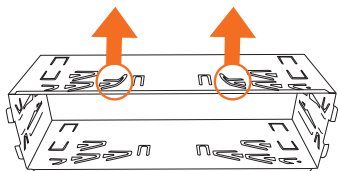
2. Insert release keys between the RC900BT and the DIN sized mounting frame, so that the locking tabs on the mount frame are released. Remove the RC900BT from the mounting frame.



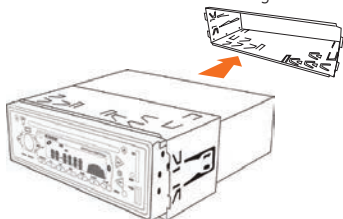
3. Insert the mounting frame into the DIN sized recess.



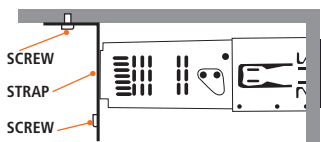
4. Bend the tabs to secure the frame in the recess.



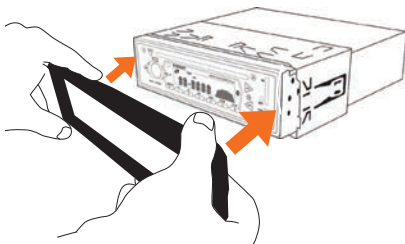
5. Insert the RC900BT in the mounting frame.



6. Attach the support strap provided to the rear of the RC900BT and fastened strap to dash framework or added support.



7. Reattach the front panel surround.



## ELECTRICAL WIRING

### DC Connections

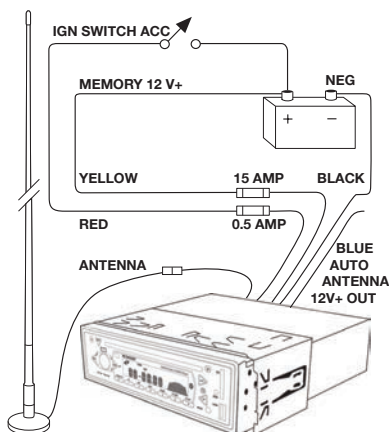
**CAUTION:** The RC900BT is designed for vehicles with a 12 V negative ground electrical system only!

**Referring to the wiring diagram on this page:**

1. Connect the YELLOW wire directly to the positive terminal of the vehicle's battery, or to a point

that has +12 volts available at all times. This lead maintains the memories within the RC900BT and is the main power source for the unit.

2. Connect the RED wire to the vehicle's +12 volt supply via an appropriate isolating switch or circuit breaker. This lead enables the radio to be switched ON and OFF. Alternatively, this wire can be connected directly to the battery's positive terminal and the RC900BT switched ON and OFF using its own controls.
3. Connect the BLACK wire to the battery's negative terminal or to the common negative bus in the electrical system.

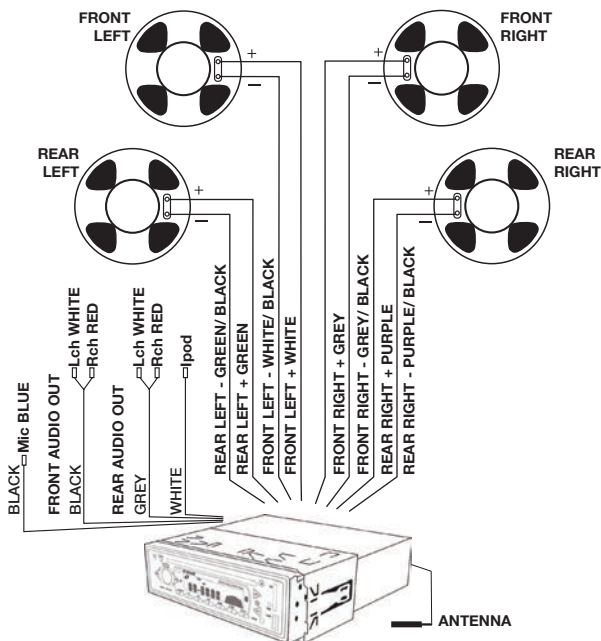


**NOTE:** The blue wire on the wiring loom supplies 12 volts when the RC900BT is switched on and can be used to turn on an external device, like the GME GA9800 amplifier.

### Speaker Connections

When connecting the speakers, observe the correct polarity as shown in the diagram above. Incorrect polarity will result in a reduction of bass response and stereo effect. The use of speakers with an impedance of less than 4 Ohms is not recommended, as they will cause excessive loading of the RC900BT's output circuit and may result in the radio overheating.

**CAUTION:** The RC900BT is a four-speaker system that requires 2 separate wires for each speaker.



A range of GME speakers are available from your local GME retailer.

Connect all four speakers as shown in the diagram above. Adjust the Fader control for the required front/rear balance.

If you wish to connect only two speakers, connect these to the rear speaker wires. The remaining speaker wires should be insulated to ensure they cannot short circuit together or to the vehicle's 12 volt or negative electrical Bus. If using only two speakers, adjust the Fader control to the rear speakers.

### Antenna Connections

Connect an AM/FM antenna to the antenna socket extending from the rear of the RC900BT. For information on a suitable antenna, contact your nearest GME branch or marine retailer.

### iPod Connectivity

The RC900BT has a white lead which, when connected with an LEO23 (optional 1.1 m lead), enables an iPod to be connected directly to the stereo. Limited functions of the iPod can be accessed

via the RC900BT, including the selection of albums and songs. Access to displaying the iPod library on the RC900BT is not available however the iPod library and all functions can be viewed on the iPod.

### Microphone

The RC900BT has a built-in microphone for use when making and receiving phone calls via **Bluetooth**. In situations where the RC900BT is installed too far from the driver for optimal voice pickup, an external microphone is also included for installation closer to the driving position. The external microphone plugs into the blue socket on the RC900BT's rear cable assembly.



External remote microphone mounting suggestions

## Reset Button

When the installation is complete, press the Reset button using a paper clip or similar object (see PRECAUTIONS on page 4). This will ensure the RC900BT is ready to operate for the first time. If at any time the controls do not seem to work (after replacing the vehicle's battery for example), press the **Reset** button to reset the microcomputer inside the RC900BT.

## Fuse Replacement

If any of the fuses blow, replace them with a standard 30 mm 3 AG type of the same rating. If the fuse blows a second time contact your retailer.

The following fuse ratings are used:

- Yellow 'Memory' lead: 15 amp.
- Red 'Ignition Switch ACC' lead: 0.5 amp.

# OPERATION

## GENERAL FUNCTIONS

### 1 Power ON/OFF

To turn the RC900BT **ON**, press the **Power** Button. The unit will resume the mode and settings that were selected when last turned OFF.

To turn the RC900BT **OFF**, press the **Power** button again. Note that when the RC900BT is turned OFF the clock is displayed without the backlight.

### Backlighting

Briefly press the **Power** button to change the brightness of the back lighting. There are three levels of backlighting available.

### 2 3 Audio Controls (VOL, SEL)

The Volume, Bass, Treble, Balance and Fader controls are selected electronically. The default setting is the **Volume** control.

To select an alternative control, press the **SEL** 3 button until the desired function is displayed on the LCD. Each press cycles to the next function in sequence. Adjust the selected control function using the **Volume** control 2.

### 4 Loudness


Pressing the **LOU** button will provide a low frequency (bass lift) boost to the audio output. To indicate the selection 'LOUD' will be illuminated

on the LCD. Pressing the **LOU** button again will de-select the loudness function.


### 5 Mute

Pressing the **MUT** button will temporarily silence the audio output. 'MUTE ON' is displayed on the LCD to indicate the RC900BT has been muted. Pressing the **MUT** button again will restore the previously selected audio level.

### 6 Clock/Time Selector

To toggle the current time on or off, press the  button.

The time is shown in the 24 hour format.

To set the clock, press and hold the  button until the time display begins to flash. The time can then be adjusted by rotating the **Volume** control. To adjust hours, rotate the control clockwise, to adjust the minutes, rotate anti-clockwise.

### 7 Mode Switch

Pressing the **MOD** button will select the RC900BT operating mode. TUNER, CD or AUX modes are sequentially selected as **MOD** is pressed. If a USB memory stick or SD Card is inserted, 'USB' or 'CARD' will also appear in the mode list. When the RC900BT is switched ON it will automatically return to the mode it was in when switched OFF.


### 8 Local/Distance Control

Pressing the **LOC** button selects an internal attenuator which will help to reduce the interference and distortion often associated with very strong local radio transmissions. For long distance reception select the DX option. Local or DX is displayed momentarily when the LOC button is pressed.

### 9 Stereo/Mono Selector

Pressing the **ST** button selects either mono or stereo reception while in FM mode. The unit will momentarily display 'MONO' or 'STEREO' when toggling the **ST** switch. The ST flag is displayed when the RC900BT is in the stereo mode.

Selecting MONO improves reception when FM signals are weak or noisy by disabling stereo detection.

Select STEREO for normal listening on FM radio bands, a  symbol is displayed when stereo signals are being received.

## RADIO OPERATION

### Country Selection

When power is first applied, the RC900BT will default to the European frequency bands. To toggle between European and USA band sets:

1. Press and hold the memory '3' key AND press the **Power** key.
2. The radio will display 'Goodbye' and switch off.
3. Switch the radio ON again using the power key. USA or Europe will be momentarily displayed to indicate the selected band.

**NOTE:** If all power is disconnected from the RC900BT, the unit defaults to European frequency bands when reconnected.

**NOTE:** The differences between bands is listed in the specifications at the rear of the manual.

### 10 Band Selector/Phone Answer

To select the required radio band (MW1, MW2, FM1, FM2 or FM3), sequentially press the **BND** button until the required band is selected.

### 11 Tuning/Selecting Tracks

#### Manual Tuning

To tune the radio manually, momentarily press the **◀▶** button to select the desired frequency. Press **▶▶** to tune up or **◀◀** to tune down.

#### Automatic Tuning (Seek)

Press and hold either the **◀◀** or **▶▶** buttons for 1 second. The RC900BT will stop seeking when a strong, clear station is detected.

### Storing of Stations in Memory

Once the desired station has been selected, press and hold one of the six preset station memory buttons on the front panel for 1 second. The corresponding button number will appear on the LCD indicating that the selected station is now programmed into the RC900BT memory.

### 13 Auto Programming of Radio Stations (AMS)

#### Select the required band

Press and hold the **AMS** button for 1 second. The RC900BT will commence searching the band

for radio stations. As each station is located it is automatically stored in the next available preset memory location. The new stations will replace any stations previously stored in that band.

### 14 Scan

In the TUNER mode, press and hold the **SCAN** button for 1 second. The RC900BT will scan the selected radio band for all available stations, pausing briefly at each to let you decide whether you wish to listen to this particular station. To exit the Scan mode, press the **SCAN** button again.

### Manually Selecting the Preset Station Memories

Briefly press the desired station memory **1- 6**. The RC900BT will jump immediately to that station and the memory number will appear on the LCD.

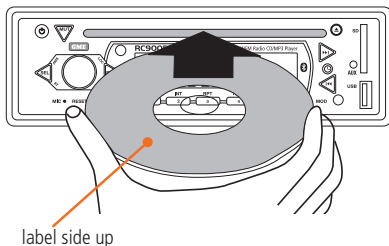
## CD/MP3 OPERATION

**WARNING:** Do not insert CDs containing anything other than standard audio or MP3 files into the disc slot. The CD mechanism contains precision laser components which could easily be damaged by inserting foreign objects.


**IMPORTANT:** Because of the wide dynamic range offered by CD systems, the difference in volume level between very soft sounds and very loud sounds can be quite high. For this reason we recommend that you avoid turning the volume level up too loud when listening to very soft music or tracks with no audio level otherwise a sudden change to very loud music could damage your speakers.

### Inserting the CD

Remove the CD from its case and insert the disc label-up into the front panel aperture. The CD mechanism will automatically draw the disc into the player and start playing track 1.





A disc symbol  is displayed on the LCD whenever there is a CD in the player. The symbol will simulate rotation whenever the disc is playing.

## 12 Ejecting a CD

Press the **EJECT** button  to stop the CD playing and automatically eject the disc.

## 11 Fast Forward/Reverse

To advance through the present track at high speed, press and hold the **FF** button. The elapsed playing time will be displayed and will advance rapidly. Release the button to continue playing at the normal speed.

To reverse through the present track at high speed, press and hold the **RR** button. The elapsed time on the display will decrease rapidly. Release the button to continue playing the present track at the normal speed.

## 11 Step to the Next Track

To step immediately to the next track, press the **FF** button once. The next selected track will begin playing, press the **FF** button to advance to the start of successive tracks.

To step immediately to the start of the track currently being played, press the **RR** button once. The current track will immediately restart. Press the **RR** button repeatedly to locate the start of previous tracks.

## 11 Pause

To pause the CD, press the **PAUSE** button once. The disc symbol on the LCD will stop rotating when the pause function has been selected.

Press the **PAUSE** button again to resume playing the CD.

## Intro-Scan

The intro-scan feature plays the first 10 seconds of each track allowing you to identify the songs on the CD. To select intro-scan press the **INT** button, the LCD will display INT, track number and elapsed time.

Press the **INT** button again to return to the normal mode.

## Repeat Play

To continually repeat the current track, press the **RPT** button. A 'RPT' flag will be illuminated on the LCD when in the repeat mode.

Press the **RPT** button again to return to the normal mode.

## Random Play

To play tracks on the CD in a random order, press the **RDM** button. A 'RDM' flag will be illuminated on the LCD when in the random mode. Press the **RDM** button again to return to the normal mode.

## MP3 Functions

MP3 (MPEG-1 Layer 3) is a format for the compression of audio files to approximately 8% of their original size. This permits a large number of files to be stored on a CD-R, CD-RW, SD card or USB memory stick.

## MP3 MUSIC SEARCH

### Track Search

To search for a specific track (from 1 – 999);

1. Press the **AMS** button once. 'TRK SCH' is displayed.
2. Rotate the **Volume** control to select the first digit (1-9) of the required track, then wait for 2-3 seconds until the next digit flashes. Repeat to select up to 3 digits.
3. If you need to return to the previous step, press the **AMS** button.
4. Once the required track number 1 – 999 is displayed, press the **SEL** button to play that track.

**NOTE:** If the track number you selected is higher than the number of available tracks, the radio will briefly display the maximum number of tracks available (e.g. MAX 125) then return to your selected track number. Press the **AMS** button to step back through the digits and reselect the correct track number.

## Character Search

---

Use Character Search to search for a song using words in the song title.

1. Press the **AMS** button twice. 'CHAR SCH' is displayed.
2. Rotate the **Volume** control to select the first letter of the desired song in the flashing character position, then wait for 2-3 seconds and the next character will flash.
3. Repeat to spell out up to 7 characters of a word from the song's title. If you need to return to the previous step, press the **AMS** button.
4. When the required word is displayed, press the **SEL** button. The LCD will display the total number of tracks (e.g. TOL 3) that match the word in your search.
5. Press the >> or << buttons to view the songs that matched your search then press the **SEL** button to play the selected song.

## Root Search

---

Root Search allows you to locate and select individual tracks within folders.

1. Press the **AMS** button three times. 'ROOT SCH' is displayed.
2. Press the >> or << buttons to select the required folder. The LCD will display the folder number briefly (e.g. 'NO. 001') followed by the first 7 letters of the folder name (e.g. BEATLES).
3. With the required folder selected, press the **SEL** button' to confirm. The LCD will display the total number of tracks (e.g. TOL 10) in your selected folder.
4. If you need to return to the previous step, press the **AMS** button
5. Press the >> or << buttons again to select individual songs. The LCD will display the track number briefly (e.g. 'NO. 001') then will display the song name (e.g. ELEANOR).
6. Press **SEL** to confirm and play the selected song.

## Precautions for CD-R and CD-RW Discs

---

The RC900BT will not play a CD that has not been finalised. Please refer to the instruction manual of

the software or the recorder you are using to write your CDs for the finalisation process.

To ensure a more reliable playback,

- Write CD-Rs and CD-RWs at speeds slower than their maximum rating.
- Avoid using CD-RWs that have been written more than 5 times.

---

**NOTE:** If a disc contains audio CD data and MP3 files, the RC900BT will only play which ever is first on the disc. If the first track on the disc is an MP3 file, the unit will only play the MP3 files from the disc, and will ignore all other files and vice versa.

---

## Precautions for MP3

---

The format of the disc must be ISO9660 level 1 or 2, or Joliet or Romeo in the expansion format.

When naming an MP3 file, ensure the file extension is '**.MP3**'

The RC900BT will not recognise a non MP3 file even if the name extension is '**.MP3**'

## CONNECTING AN IPOD

---

The RC900BT can be connected directly to an iPod via the optional LE023 iPod interface lead. The interface lead connects to the iPod fly lead at the rear of the RC900BT and provides a direct connection to the interface socket on the iPod. The cable is compatible with the current iPod Nano, Classic, Touch and iPhone 3/4 models.

When an iPod is connected the RC900BT displays 'IPOD'. Album and song selections can be made from the RC900BT or directly from the iPod itself. Selections will be displayed on the iPod screen.

To make individual selections from the RC900BT controls press the **AMS** button. 'Menu' is displayed on the RC900BT. While the menu is active;

- Press the **AMS** button to step back through the iPod screen menus
- Rotate the **Volume** control to highlight items on the iPod screen
- Press **BND** to make a selection.

To exit the RC900BT's iPod 'Menu' function press **SEL** or wait a few seconds and the menu will

time-out. Normal AMS, Volume and BND functions will resume.

To select another song, press **◀◀** or **▶▶** to step forward or back through the song list.


The iPod battery will be charged while it is connected to the RC900BT.

## CONNECTING WITH BLUETOOTH

**Bluetooth** is a short range wireless system used to transfer data between devices. Using **Bluetooth**, your smart phone or **Bluetooth** enabled portable media player is able to stream music wirelessly to your RC900BT and receive phone calls.

### Connection Process

To connect to the RC900BT using **Bluetooth**;

1. On your smart phone or portable media player, select the 'Settings' option and select 'Bluetooth'. If **Bluetooth** is currently switched off, switch it On.
2. View the list of nearby **Bluetooth** devices (some devices require you to tap 'SCAN' to populate the list). The RC900BT will appear in the list as 'RC900BT'. Select 'RC900BT' as the desired device.
3. When asked for a Pin code, enter 0000.
4. If the connection is successful the RC900BT will beep and the **Bluetooth** icon  will be displayed. The RC900BT will then appear as a connected **Bluetooth** device in your smart phone or media player.

### To Play Music from the Bluetooth Device

Once your device is linked to your RC900BT via **Bluetooth**, a 'BT Music' option will appear as an input source on the RC900BT. To select the **Bluetooth** source, press the **MOD** key repeatedly until 'BT Music' is displayed.

You can now select and play your desired music on your smart phone or media player and the sound will be heard through the speakers connected to the RC900BT.

### Receiving Phone Calls

The RC900BT is fitted with an internal microphone allowing you to make or receive phone calls on your smart phone while connected via **Bluetooth**. For improved performance an external microphone is

also provided allowing you to mount the microphone in a convenient location closer to the driving position where it will more easily pickup your voice during phone calls.

To answer an incoming call, press the **BND** key on the RC900BT or the Answer key on your phone. If your phone asks to you select the audio source, select 'RC900BT' to have the call transferred to your RC900BT. Talk towards the microphone in a normal voice. The caller's voice will be heard in the RC900BT speakers. Adjust the RC900BT volume for a comfortable level.

To hang up the call, press the **SCAN** key on the RC900BT or the Hangup key on your phone.

To make an outgoing call simply follow the procedure on your smart phone.

## FRONT PANEL INPUTS

There are standard USB and SD Card inputs located on the front panel.

### USB

The USB Input accepts USB flash memory drives of up to 16GB loaded with MP3 files containing up to 2000 songs.

When the USB input is in use, 'USB' is added to the options on the MOD button.

**NOTE:** The USB input is not designed to be connected to the USB port of an external MP3 player. External MP3 players should be connected to the AUX input via an audio interface cable.

### SD Card

The SD card slot accepts SD and SDHC memory cards up to 32GB.

When the SD card slot is in use, 'CARD' is added to the options on the MOD button.

### Aux Input

The RC900BT has a 2.5 mm stereo jack low level (1 volt peak to peak) audio input. Owners may use this input for external audio sources that they wish to play through the vehicle's stereo system.

GME offers an interface cable (LE68) for connecting MP3 portable devices. When using this connection, it is necessary to use the portable device functions to control play.

To use the AUX input, press the **MOD** button until 'AUX' is displayed.

### REAR OUTPUT

The RC900BT series has front and rear, right and left channel, low level audio output lines. Owners may use these outputs to drive external booster amplifiers should they require supplementary audio output power.

When a suitable external amplifier is connected the volume, tone and balance settings may still be controlled at the RC900BT.

**WARNING:** Extreme care should be taken when connecting any external device to your RC900BT rear inputs or outputs. GME strongly recommends that all such installations should be carried out by a suitably qualified technician.

### CONFIGURATION MENU

Press and hold the **SEL** key to enter the configuration menu then briefly press the **SEL** key to cycle through the available configuration options. Rotate the **Volume** control to change the selected option. Press **BND** to exit the menu or simply wait a few seconds for it to time-out.

CONFIGURATION MENU TABLE		
Function	Options	Description
Beep	On   Off	Enables/disables confirmation beeps on key presses
Audio Response	User Set   Flat   Classic   Rock   Pop	Selects preset audio responses for various music styles. Select 'User Set' if you prefer to manually adjust the audio response using the Bass/Treble controls.
Volume	Last   Default	Set the volume level used when the radio is turned on. Select 'Last' to restore the volume to the last used setting.  Select default to restore the volume to a present default setting.
AVOL	Min   01-46   Max	Sets the preset volume setting for the 'Default' option above
iPod Baud Rate (BPS)	38400   57600	Sets the Baud Rate for communicating with iPod devices.
Clock	On   Off	Enables/disables the clock on the display when the RC900BT is switched off.
Clock Format	24   12	Selects 12 hour or 24 hour clock display

### OPTIONAL ACCESSORIES

There are a number of high quality GME accessories available to enhance your entertainment experience. These accessories are available through your local GME retailer, should you have any difficulty in obtaining any GME accessory, please call or email your local GME Sales Office (within Australia and New Zealand). Contact details are listed on the back page of this manual.

International customers should also refer to the back page for details of your local importer or visit: [www.gme.net.au](http://www.gme.net.au)

- SPK011B and SPK012B speakers
- Comprehensive range of antennas
- Interface cable for MP3 devices
- LE023 – iPod Connectivity lead 1.1 m long

**NOTE:** From time to time GME may introduce new and additional products to the range or discontinue existing accessories. Details of any changes can be found on our website: [www.gme.net.au](http://www.gme.net.au)



SPK011B



LE023 iPod interface cable



LE68 AUX input cable



SPK012B



GA9800 – GME amplifier



AEM2

AEM3

## RC900BT TROUBLE SHOOTING GUIDE

Symptom	Cause	Solution
No power	Vehicles battery switch is not on.	Check master switch if fitted
	One of the fuses is blown	Replace the damaged fuse with the correct value.
Error messages displayed on LCD or functions not operating.	Microprocessor lock up	Press Reset button
Poor radio reception.	Damaged or incorrect type of antenna.	Check antenna and replace if necessary.
CD cannot be loaded.	There is already a CD in the player.	Remove disc, then insert new CD
	CD is upside down	Insert correct way up
	CD is damaged or dirty	Clean or try another disc
	CD has moisture on it	Dry disc and retry
	CD reader has moisture on lens	Leave player on for an hour or so and retry.

## SPECIFICATIONS\*

### FM RADIO

Frequency Range:	87.5 - 108 MHz (Eu./Aust./N.Z.) 87.5 - 107.9 MHz (U.S.A.)
Frequency Step:	50 kHz (Eu./Aust./NZ) 200 kHz /USA
Intermediate Frequency:	10.7 MHz
Sensitivity (30 dB S/N):	13 dBuV (typical)
Channel Separation:	32 dB
Station Memories:	18

### AM RADIO

Frequency Range:	522 - 1620 kHz (Eu./Aust./N.Z.) 530 - 1710 kHz (U.S.A.)
Frequency Step:	9 kHz (Eu./Aust./N.Z.) 10 kHz (U.S.A.)
Intermediate Frequency:	450 kHz
Sensitivity (20 dB S/N):	17 dBuV
Station Memories:	12

### COMPACT DISC MECHANISM

Mechanism:	Auto Loading
Signal to Noise Ratio:	58 dB
Format:	8 Times Oversampling
Environmental:	Anti-vibration/Anti-shock

### AUDIO AMPLIFIER

Audio Output:	(4 channels x 45 W Peak = 180 W Peak) @ 10% THD.
Speaker Impedance:	4 Ohm
Bass Adjustment Range:	+/- 10 dB
Treble Adjustment Range:	+/- 12 dB

### GENERAL

DC Supply Input:	10 – 16 volts Negative Ground
Memory Back-up:	External Back-up Memory Wire
Back-up Current:	Approximately 16 mA
Overall Size:	232 mm (W) x 97 mm (H) x 200 mm (D) Excluding Heat Dissipater
Weight:	1.55 kg
Supply Current:	7 amps (max.)

\*All specifications are typical and subject to change without notice or obligation.

## SC CONTRACT WARRANTY AGAINST DEFECTS

This warranty against defects is given by Standard Communications Pty Ltd ACN 000 346 814 (We, us, our or GME). Our contact details are set out in clause 2.7.

### 1. Consumer guarantees

- 1.1 Our goods come with guarantees that cannot be excluded under the Australian Consumer Law. You are entitled to a replacement or refund for a major failure and for compensation for any other reasonably foreseeable loss or damage. You are also entitled to have the goods repaired or replaced if the goods fail to be of acceptable quality and the failure does not amount to a major failure.
- 1.2 To the extent we are able, we exclude all other conditions, warranties and obligations which would otherwise be implied.

### 2. Warranty against defects

- 2.1 This warranty is in addition to and does not limit, exclude or restrict your rights under the Competition and Consumer Act 2010 (Australia) or any other mandatory protection laws that may apply.
- 2.2 We warrant our goods to be free from defects in materials and workmanship for the warranty period (see warranty table) from the date of original sale (or another period we agree to in writing). Subject to our obligations under clause 1.2, we will at our option, either repair or replace goods which we are satisfied are defective. We warrant any replacement parts for the remainder of the period of warranty for the goods into which they are incorporated.
- 2.3 To the extent permitted by law, our sole liability for breach of a condition, warranty or other obligation implied by law is limited
  - (a) in the case of goods we supply, to any one of the following as we decide –
    - (i) the replacement of the goods or the supply of equivalent goods;
    - (ii) the repair of the goods;
    - (iii) the cost of repairing the goods or of acquiring equivalent goods;
  - (b) in the case of services we supply, to any one of the following as we decide –
    - (i) the supplying of the services again;
    - (ii) the cost of having the services supplied again.
- 2.4 For repairs outside the warranty period, we warrant our repairs to be free from defects in materials and workmanship for three months from the date of the original repair. We agree to

re-repair or replace (at our option) any materials or workmanship which we are satisfied are defective.

- 2.5 We warrant that we will perform services with reasonable care and skill and agree to investigate any complaint regarding our services made in good faith. If we are satisfied that the complaint is justified, and as our sole liability to you under this warranty (to the extent permitted at law), we agree to supply those services again at no extra charge to you.
- 2.6 To make a warranty claim you must before the end of the applicable warranty period (see warranty table), at your own cost, return the goods you allege are defective, provide written details of the defect, and give us an original or copy of the sales invoice or some other evidence showing details of the transaction.
- 2.7 Send your claim to:  
Standard Communications Pty Ltd.  
PO Box 96 Winston Hills, NSW 2153, Australia.  
Tel: (02) 8867 6000 Fax: (02) 8867 6199  
Email: servadmin@gme.net.au
- 2.8 If we determine that your goods are defective, we will pay for the cost of returning the repaired or replaced goods to you, and reimburse you for your reasonable expenses of sending your warranty claim to us.

### 3. What this warranty does not cover

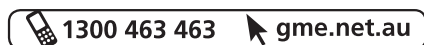
- 3.1 This warranty will not apply in relation to:
  - (a) goods modified or altered in any way;
  - (b) defects and damage caused by use with non Standard Communications products;
  - (c) repairs performed other than by our authorised representative;
  - (d) defects or damage resulting from misuse, accident, impact or neglect;
  - (e) goods improperly installed or used in a manner contrary to the relevant instruction manual; or
  - (f) goods where the serial number has been removed or made illegal.

### 4. Warranty period

- 4.1 We provide the following warranty on GME and Kingray products. No repair or replacement during the warranty period will renew or extend the warranty period past the period from original date of purchase.

PRODUCT TYPE	WARRANTY PERIOD
Land and marine stereo systems	1 year

For more information call or visit us:



A division of Standard Communications Pty. Ltd.

**Head Office:** PO Box 96, Winston Hills, NSW 2153, Australia.

New Zealand: PO Box 58, 446 Botany, Auckland, 2163, NZ. T: (09) 274 0955.

All other international enquiries email: [export@gme.net.au](mailto:export@gme.net.au)

Part Number: 310634 Drawing Number: 47183-3



FLUSH MOUNT CUTTING TEMPLATE

